



WINTER PACKAGE 2025

01/02 NIGHT PACKAGE

Valid from 10th October 2025 to 31st March 2026

OUR FACILITIES



Swimming pool



Evening Entertainment



Indoor & Outdoor Games



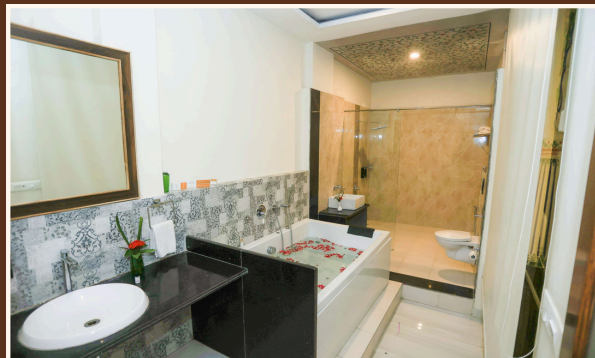
Dining/Food & Beverages Service



Jacuzzi



Business Event Facilities



Room details

Create Unforgettable Memories!

DELUX ROOM

UNITS	24	1 NIGHT	6,999/-
OCCUPANCY	02	2 NIGHTS	12,999/-

SUPER DELUX ROOM

UNITS	16	1 NIGHT	7,999/-
OCCUPANCY	02	2 NIGHTS	14,999/-

SUPERIOR ROOM

UNITS	14	1 NIGHT	8,999/-
OCCUPANCY	02	2 NIGHTS	16,999/-

GARDEN SUPER DELUX ROOM

UNITS	05	1 NIGHT	9,999/-
OCCUPANCY	02	2 NIGHTS	18,999/-

EVEREST SEMI SUITE

UNITS	30	1 NIGHT	11,499/-
OCCUPANCY	02	2 NIGHTS	20,999/-

EVEREST SUITE

UNITS	06	1 NIGHT	12,499/-
OCCUPANCY	02	2 NIGHTS	22,999/-

HONEYMOON SUITE

UNITS	02	1 NIGHT	20,499/-
OCCUPANCY	02	2 NIGHTS	39,999/-

**Inclusive of GST*

**Exclusive of festive dates & long weekends.*

FOR MORE INFORMATION

+91 72720 32000
info@theeveresthillresort.com
www.theeveresthillresort.com
The Everest Hill Resort, Kumbhalgarh



PACKAGE HIGHLIGHTS

- Extra bed: ₹5,000 for both nights (02 nights basis).
- Hi-tea (Tea, Coffee, and Cookies) served from 05:00 PM to 05:30 PM on both days (included).
- Rates are inclusive of: 02 dinners, 02 breakfasts, GST.
- Complimentary Wi-Fi access.
- Children below 10 years stay complimentary without an extra bed.
- Check-in time: 02:00 PM | Check-out time: 11:00 AM.
- Early check-in and late check-out are subject to availability and charged additionally.
- Valid Government-approved ID proof required for each guest.
- Swimming costume is mandatory for pool usage.
- Extra bed for a second child (up to 10 years): ₹1,000 per day.